

# Zinc Oxide Lightning Arresters (ZLA)

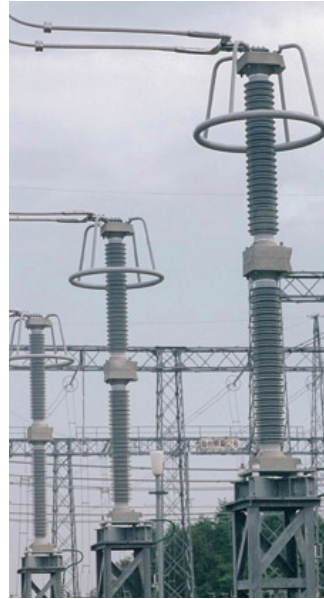
## Free standing type ZLA Production Range:4.2kV-612kV



### **Porcelain ZLA** **Features**

- Superior lightning protection
- Resistant to multiple lightning strikes

**Porcelain ZLA**  
With Nominal Discharge Current  
: 20kA



### **Polymer ZLA** **Features**

- Superior earthquake resistance by use of polymer insulators

**Polymer ZLA**  
With Nominal Discharge Current  
: 10kA

## Tank type ZLA (for GIS) Production Range:84kV-826kV



### **Feature**

- Applicable to up to 800kV class GIS

**Tank type ZLA**  
With Nominal Discharge Current: 20kA